

Section 7

Ballast Weight

Procedures covered in this section:

Install ballast weight.

Cards used in this section:

HARDWARE CARD
E22 CARD 1

Prints used in this section:

E22-2000

Templates used in this section:

None

Tools required for this section:

Air or electric drill	Grinder
Center punch	Mallet
Drift punch	Tape measure

Drill bits of the following sizes: 3/32", 3/16", 1/4", 5/16"

Ratchet with sockets of the following sizes: 3/8", 7/16", 1/2"

Wrenches of the following sizes: 3/8", 7/16", 1/2"

Notes:

1. BALLAST WEIGHT: Molten lead must be used to fill the weight. Do not use lead shot, as it would pour out of the hole that is drilled for the security pin.

CAUTION: WEAR SAFETY GLOVES AND EYE PROTECTION WHEN POURING MOLTEN LEAD.

Photo #1

Use print E22-2000 when constructing the ballast weight assembly.
Parts as received from RotorWay International.



Photo #2

This view shows how the unit will fit together when installed. The two mount attachment plates must fit snug on each side of the tunnel cover. Apply a layer of silicone between each plate and the aluminum tunnel cover to help prevent the aluminum from cracking.

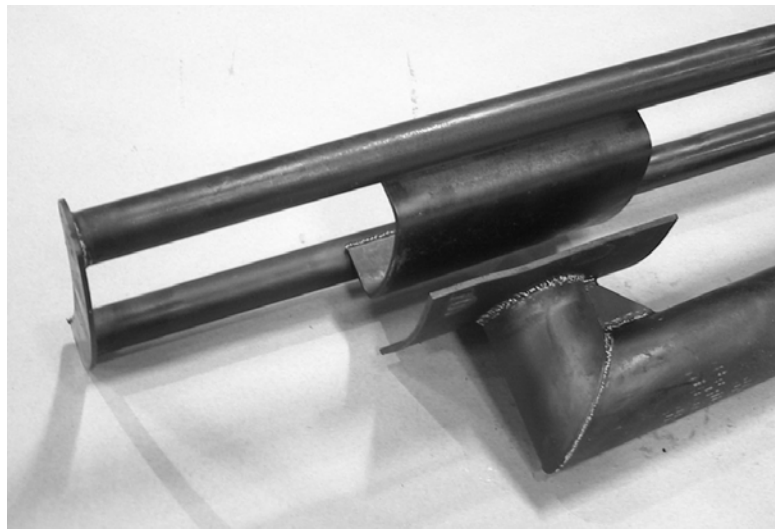


Photo #3

View looking inside the tail boom from the end. Position the mount so that the attachment plate just touches the skin. Use E00-2301(3/16 x 5/8) bolts to attach the Support Tube Weldment to bulkheads 1 and 2.



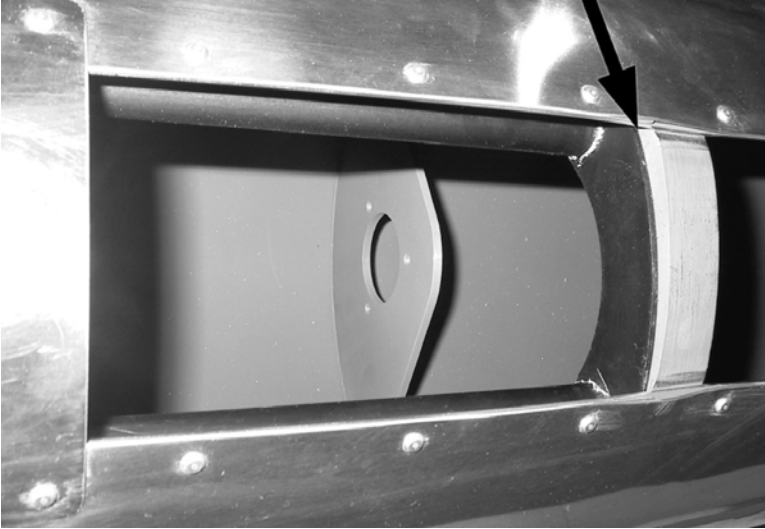


Photo #4

The end plates must fit snug against the bulkheads. Add shims if necessary. Viewed from underneath, looking up.



Photo #5

View of the Mount Tube Weldment in place on the tail boom. Use bolts E00-2505 (5/16 x 7/8) to attach the Mount Tube Weldment to the internal Support Tube Weldment.



Photo #6

Ballast weight mounted with pin in place.