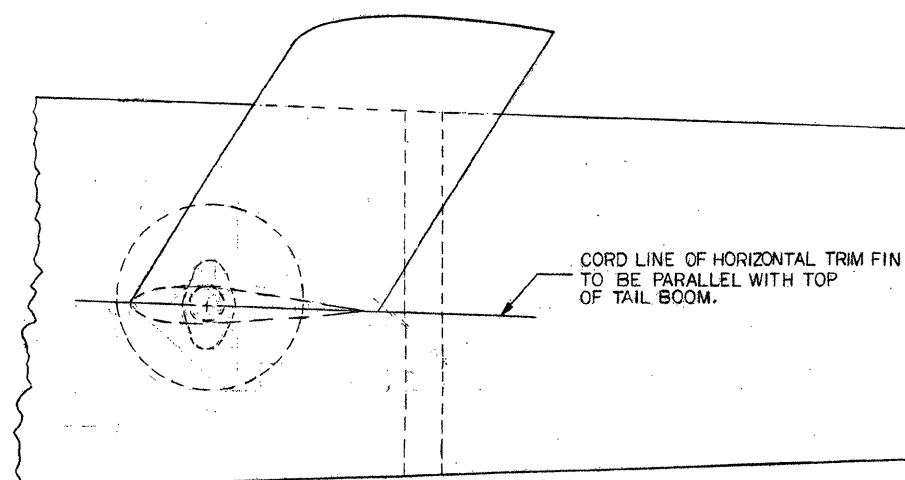
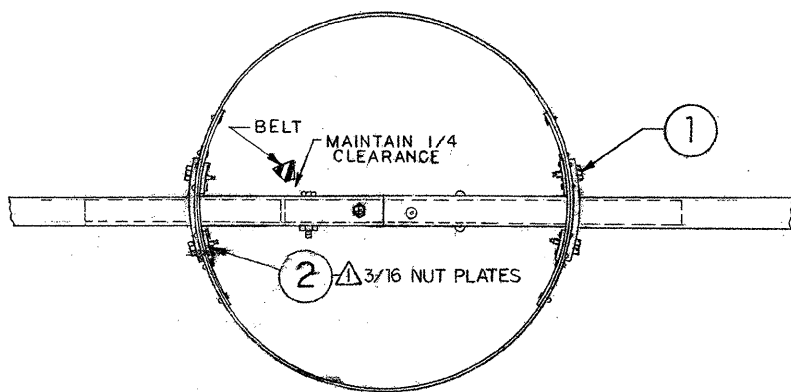
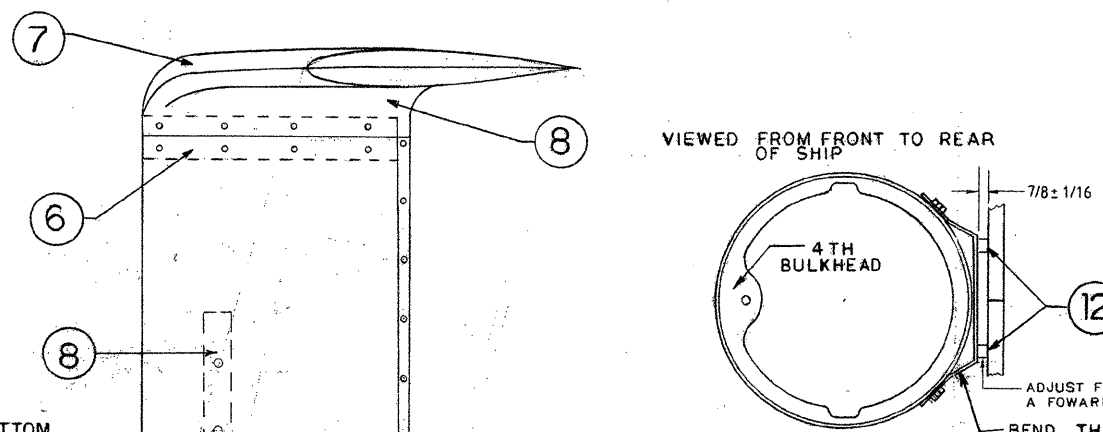


9 8 7 6 5 4 3 2



SEAM LINE SHOULD BE PARALLEL WITH CENTER LINE OF TAIL BOOM

WOOD END PLUS FAIRING FORM TO FIT TOP AND BOTTOM OF TRIM FIN. BOND IN PLACE WITH 3M BLADE GLUE AND SECURE WITH 6 TO 8 WOOD SCREWS.



SEE TEMPLATE E09-1

USE 5 POP RIVETS TOP AND BOTTOM. SPACE 2 1/4 APART. INBOARD 2 RIVETS TO ALSO SECURE THE SPLICE TUBING.

1/16" CLEARANCE TRIM SKIN TO FIT AROUND BRACKET TO HOLD THIS DIMENSION

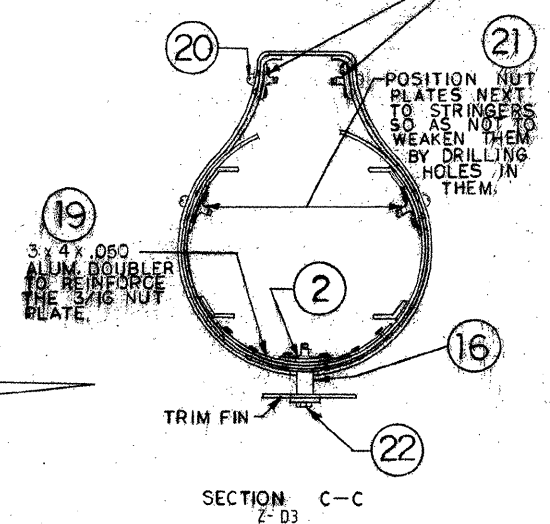
FILL BACK SIDE END WITH FIBER GLASS

SEE PRINT E9-2000 FOR PROPER POSITIONING OF THESE 3/16 BOLTS

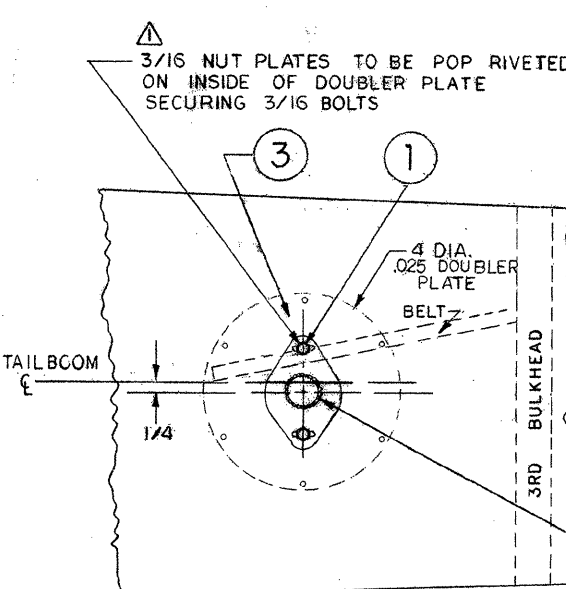
MAINTAIN A 7/8 ± 1/16 SPACE BETWEEN BKT P/N E 9-3252 AND VERTICAL FIN

BOLT IN PLACE THEN CUT SPACER TO PROPER LENGTH TO ACHIEVE A 2° POSITIVE ANGLE. SEE ADJUSTMENT DRAWING BELOW.

ATTACH 8-32 NUT PLATES TO SLIDER COVER WHICH IS TO BE SLIPPED UNDER THE TAIL CONE COVER AS SHOWN



SECTION C-C



SECTION B-B

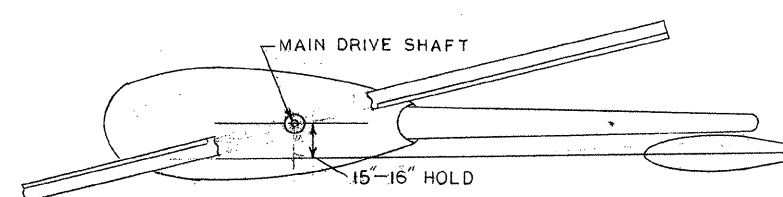
TRIM FIN SPAR IS DISPLACED BELOW BOOM 2 1/4" SO THE TAIL ROTOR DRIVE BELT WILL NOT INTERFERE. MAINTAIN 1/4" BELT CLEARANCE MINIMUM

REF. NO.	PART NO.	PART NAME	QTY.
1.	E00-2300	BOLT 3/16 X 1/2	4
2.	E00-7100	10/32 NUT PLATES	10
3.	E09-3140	DOUBLER PLATE (FROM E24-9780)	2
4.	E00-2306	BOLT 3/16 X 1-1/4	2
5.	E09-3280	HORIZ. TRIM FIN BRACKET	2
6.	E09-3271	HORIZ. TRIM FIN WOOD PLUGS	2
7.	E09-6211	WINGLET, PILOT (OUTSIDE)	1
8.	E09-6231	WINGLET, PILOT (INSIDE)	1
9.	E09-6221	WINGLET, PASS. (OUTSIDE)	1
10.	E09-6241	WINGLET, PASS. (INSIDE)	1
11.	E09-9021	HORIZ. TRIM FIN ASSY.	1
12.	E09-3323	VERTICAL FIN SPACER, FRONT	2
13.	E09-3252	VERT. TRIM FIN ATTACHMENT BRKT.	1
14.	E00-2414	BOLT 1/4 X 2-3/8	2
15.	E00-2302	3/16 X 5/8 COUNTERSUNK SCREW	1
16.	E09-3321	VERT. FIN SPACER, REAR	1
17.	E09-7100	TAIL CONE COVER-FIBERGLASS	1
18.	E09-7110	SLIDER COVER-FIBERGLASS	1
19.	E09-3310	VERT. TRIM FIN DOUBLER (FROM E09-3330)	1
20.	E00-1200	8-32 X 7/16 PHILLIPS HEAD SCREW	4
21.	E00-7000	8-32 NUT PLATES	4
22.	E00-2309	BOLT 3/16 X 1-7/8	1
23.	E09-3241	VERT. TRIM FIN SPAR	1
24.	E09-9010	VERT. TRIM FIN ASSY.	1
25.	E09-3260	VERT. TRIM FIN WOOD PLUGS	2
26.	E00-2303	BOLT 3/16 X 3/4	4

4 POP RIVETS 90° SPACING

SECTION D-D

FIT WINGLET HALVES, FIBERGLASS TOGETHER. FORM WOOD PLUGS TO FIT INSIDE FIN AND WINGLET. SECURE WITH WOOD SCREWS. COVER SEAM WITH FIBERGLASS.



TO ADJUST FOR A 2° TRIM FIN ANGLE ESTABLISH A LINE OF SIGHT REFERENCE ON THE MAIN CHORD LINE AT THE TOP OF THE VERTICAL TRIM FIN AND OBSERVE 15-16" AT MAIN DRIVE SHAFT. FLIGHT TEST MUST BE CONDUCTED TO CONFIRM THE CORRECTNESS OF THE 2° POSITIVE ANGLE.

11-20-97 REVISION 4: PART NUMBERS UPDATED
9-29-96 REVISION 3: ADD NOTE (REF. ZONE A4)
9-9-94 REVISION 2: ADD WINGLETS
8-26-91 REVISION 1: ZONE D7 5.3/4 DIM. TO 6 OF SPAR

ROTORWAY INTERNATIONAL PHOENIX, ARIZONA	
SCALE: NONE	APPROVED BY: <i>[Signature]</i>
DATE: 2-1-91	DRAWN BY: R.M.M.
REVIS: 11-20-97	
VERTICAL & HORIZONTAL TRIM FIN	
DRAWING NUMBER E09-2001-4	