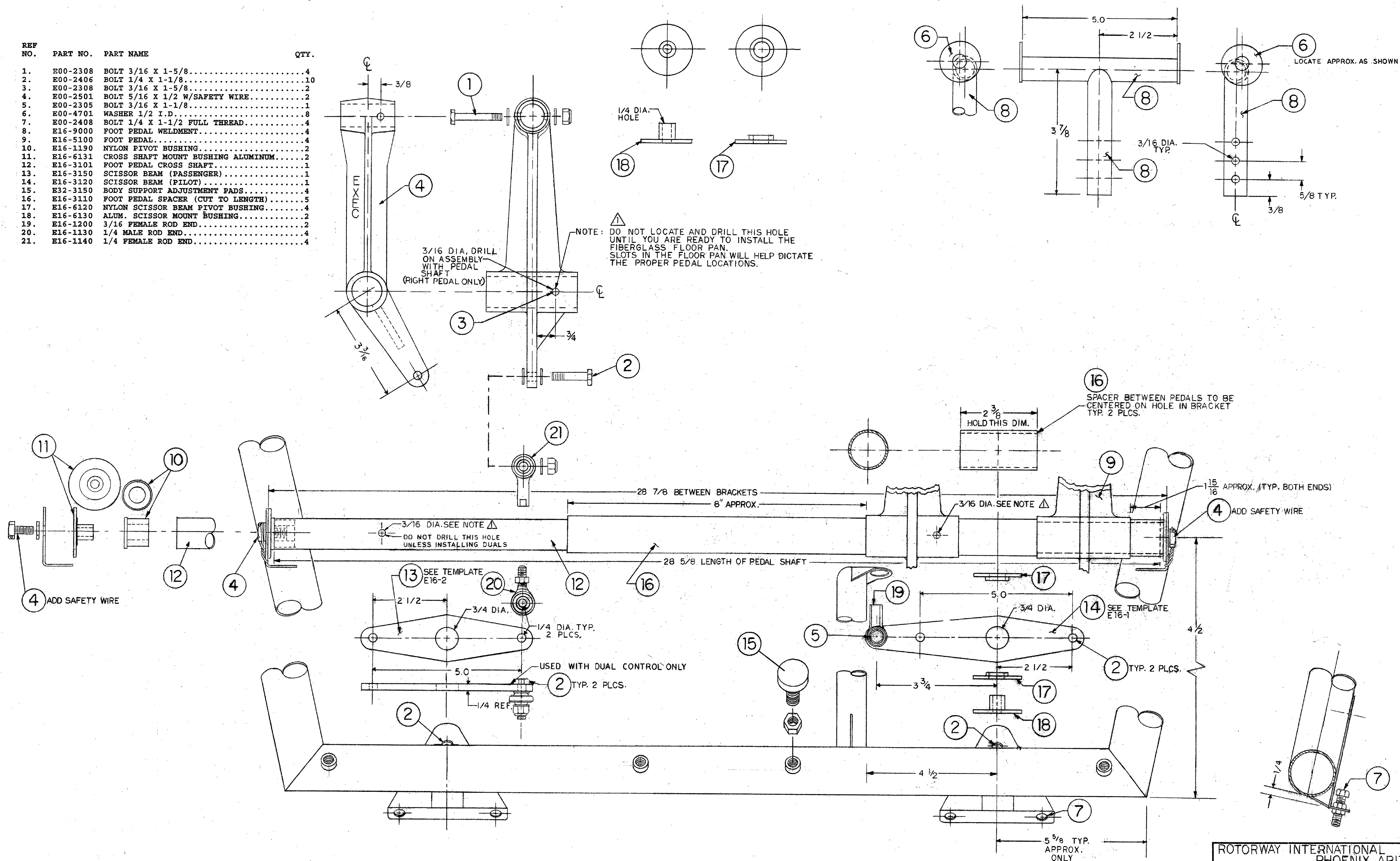


REF NO.	PART NO.	PART NAME	QTY.
1.	E00-2308	BOLT 3/16 X 1-5/8.....	4
2.	E00-2406	BOLT 1/4 X 1-1/8.....	10
3.	E00-2308	BOLT 3/16 X 1-5/8.....	2
4.	E00-2501	BOLT 5/16 X 1/2 W/SAFETY WIRE.....	2
5.	E00-2305	BOLT 3/16 X 1-1/8.....	1
6.	E00-4701	WASHER 1/2 I.D.....	8
7.	E00-2408	BOLT 1/4 X 1-1/2 FULL THREAD.....	4
8.	E16-9000	FOOT PEDAL WELDMENT.....	4
9.	E16-5100	FOOT PEDAL.....	4
10.	E16-1190	NYLON PIVOT BUSHING.....	2
11.	E16-6131	CROSS SHAFT MOUNT BUSHING ALUMINUM.....	2
12.	E16-3101	FOOT PEDAL CROSS SHAFT.....	1
13.	E16-3150	SCISSOR BEAM (PASSENGER).....	1
14.	E16-3120	SCISSOR BEAM (PILOT).....	1
15.	E32-3150	BODY SUPPORT ADJUSTMENT PADS.....	4
16.	E16-3110	FOOT PEDAL SPACER (CUT TO LENGTH).....	5
17.	E16-6120	NYLON SCISSOR BEAM PIVOT BUSHING.....	4
18.	E16-6130	ALUM. SCISSOR MOUNT BUSHING.....	2
19.	E16-1200	3/16 FEMALE ROD END.....	2
20.	E16-1130	1/4 MALE ROD END.....	4
21.	E16-1140	1/4 FEMALE ROD END.....	4



ROTORWAY INTERNATIONAL PHOENIX, ARIZONA		
SCALE: NONE	APPROVED BY: <i>[Signature]</i>	DRAWN BY: R.M.M.
DATE: 2-1-91		REVISED 5-2-94
DIRECTIONAL CONTROL		
DRAWING NUMBER		E16-2000-1

5-2-94 REVISION 1: PADS (9) ADDED