

9

8

7

6

5

4

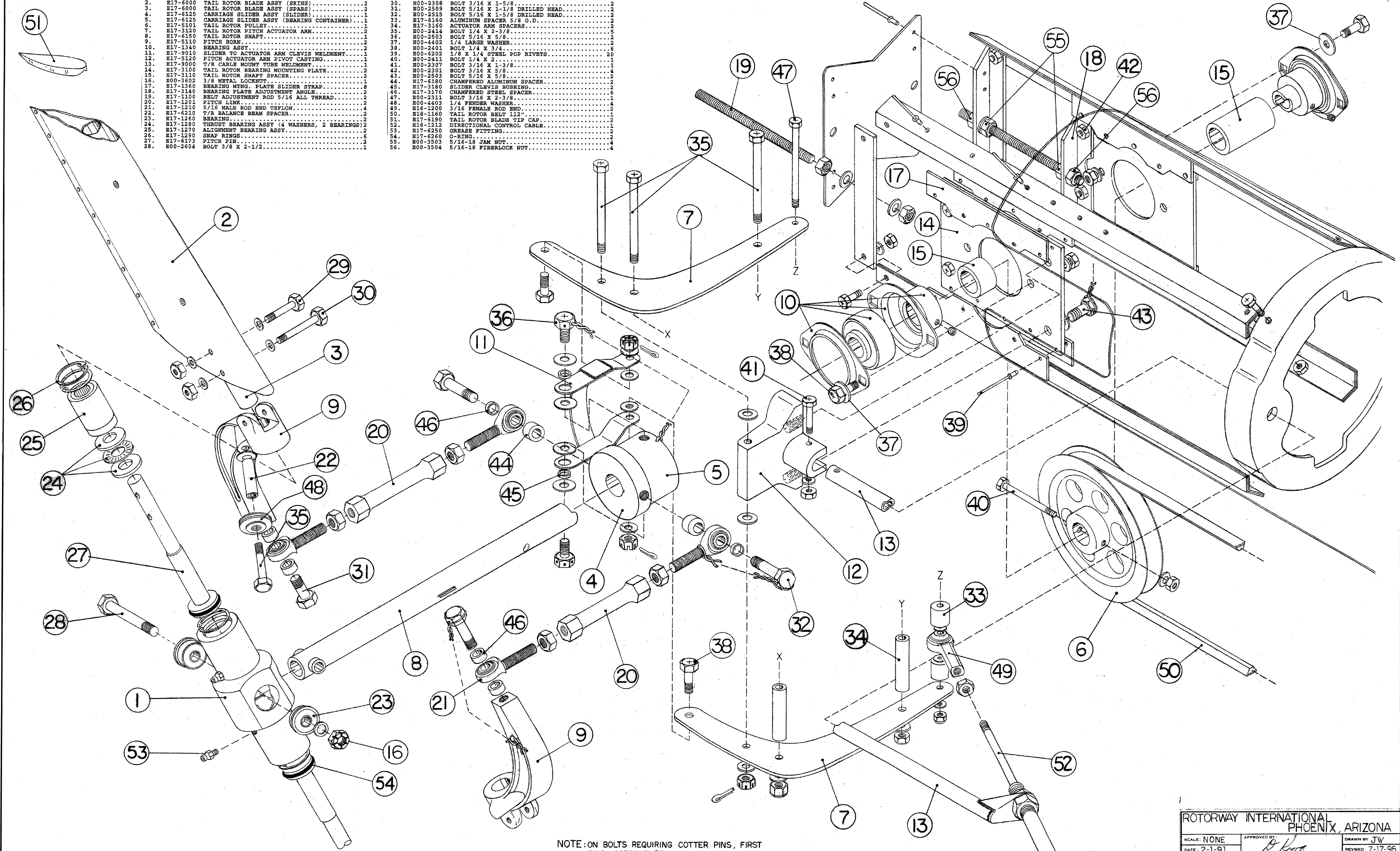
3

2

1

REF. NO.	PART NO.	PART NAME	QTY.
1.	E17-6100	THRUST BEARING CONTAINER/T.R. BARREL.....	1
2.	E17-6000	TAIL ROTOR BLADE ASSY (SKINS).....	2
3.	E17-6000	TAIL ROTOR BLADE ASSY (SPARS).....	2
4.	E17-6125	CARRIAGE SLIDER ASSY (SLIDER).....	1
5.	E17-6125	CARRIAGE SLIDER ASSY (BEARING CONTAINER).....	1
6.	E17-5101	TAIL ROTOR PULLEY.....	1
7.	E17-5120	TAIL ROTOR PITCH ACTUATOR ARM.....	1
8.	E17-6150	TAIL ROTOR SHAFT.....	1
9.	E17-5110	PITCH HORN.....	1
10.	E17-1340	BEARING ASSY.....	2
11.	E17-9010	SLIDER TO ACTUATOR ARM CLEVIS WELDMENT.....	1
12.	E17-5120	PITCH ACTUATOR ARM PIVOT CASTING.....	1
13.	E17-9000	T/R CABLE MOUNT TUBE WELDMENT.....	1
14.	E17-3100	TAIL ROTOR BEARING MOUNTING PLATE.....	2
15.	E17-3110	TAIL ROTOR SHAFT SPACER.....	2
16.	E00-1602	3/8 METAL LOCKWASH.....	1
17.	E17-1360	BEARING MNG. PLATE SLIDER STRAP.....	8
18.	E17-3140	BEARING PLATE ADJUSTMENT ANGLE.....	2
19.	E17-1100	BEIT ADJUSTMENT ROD 5/16 ALL THREAD.....	2
20.	E17-1201	PITCH LINK.....	2
21.	E17-1210	5/16 MALE ROD END TEFLOW.....	4
22.	E17-6210	T/R BALANCE BEAM SPACER.....	2
23.	E17-1260	BEARING.....	2
24.	E17-1280	THRUST BEARING ASSY (4 WASHERS, 2 BEARINGS).....	2
25.	E17-1270	ALIGNMENT BEARING ASSY.....	2
26.	E17-1290	SNAP RINGS.....	6
27.	E17-6173	PITCH PIN.....	2
28.	E00-2604	BOLT 3/8 X 2-1/2.....	2

REF. NO.	PART NO.	PART NAME	QTY.
29.	E00-2305	BOLT 3/16 X 1-1/8.....	2
30.	E00-2308	BOLT 3/16 X 1-5/8.....	2
31.	E00-2509	BOLT 5/16 X 1-1/8 DRILLED HEAD.....	2
32.	E00-2515	BOLT 5/16 X 1-5/8 DRILLED HEAD.....	2
33.	E17-6160	ALUMINUM SPACER 5/8 O.D.....	2
34.	E17-3160	ACTUATOR ARM SPACERS.....	2
35.	E00-2414	BOLT 1/4 X 2-3/8.....	5
36.	E00-2503	BOLT 5/16 X 5/8.....	2
37.	E00-4402	1/4 LARGE WASHER.....	2
38.	E00-2401	BOLT 1/4 X 3/4.....	6
39.	E00-6202	1/8 X 1/4 STEEL POP RIVETS.....	20
40.	E00-2411	BOLT 1/4 X 2.....	1
41.	E00-2307	BOLT 3/16 X 1-3/8.....	1
42.	E00-2301	BOLT 3/16 X 5/8.....	4
43.	E00-2503	BOLT 5/16 X 5/8.....	2
44.	E17-6180	CHAMFERED ALUMINUM SPACER.....	2
45.	E17-3180	SLIDER CLEVIS BUSHING.....	2
46.	E17-3170	CHAMFERED STEEL SPACER.....	6
47.	E00-2311	BOLT 3/16 X 2-3/8.....	1
48.	E00-4403	1/4 FENDER WASHER.....	4
49.	E16-1200	3/16 FEMALE ROD END.....	2
50.	E18-1160	TAIL ROTOR BELT 112.....	1
51.	E17-6190	TAIL ROTOR BLADE TIP CAP.....	2
52.	E16-1212	DIRECTIONAL CONTROL CABLE.....	1
53.	E17-6250	ORANGE FITTING.....	2
54.	E17-6260	O-RING.....	2
55.	E00-3503	5/16-18 JAM NUT.....	4
56.	E00-3504	5/16-18 FIBERLOCK NUT.....	4



NOTE: ON BOLTS REQUIRING COTTER PINS, FIRST FIND CORRECT TENSION OF NUT, THEN DRILL COTTER PIN HOLE THROUGH BOLT IN LINE WITH SLOTS OF NUT.

7-17-95 REVISION 3: CALLOUT NUT P/Ns 59 AND 60
 2-22-95 REVISION 2: ADD 162 F PART NUMBERS
 5-10-93 REVISION 1: ADD FITTING 63 AND O-RING 64

ROTORWAY INTERNATIONAL PHOENIX, ARIZONA	
SCALE: NONE	APPROVED BY: <i>[Signature]</i>
DATE: 2-1-91	DRAWN BY: JTV
REVISOR: 7-17-95	
TAIL ROTOR	
DRAWING NUMBER: E17-2000-3	